



SNMP CARD CONFIGURATION GUIDE

STEP 1 - Find your network addresses

In order to correctly identify the correct segment of your PC's IP address, you need to access the command prompt. (search for "Prompt" in the Windows search bar at the bottom left)



Image 1 - Command Prompt

You need to type ipconfig and press enter to view the necessary information

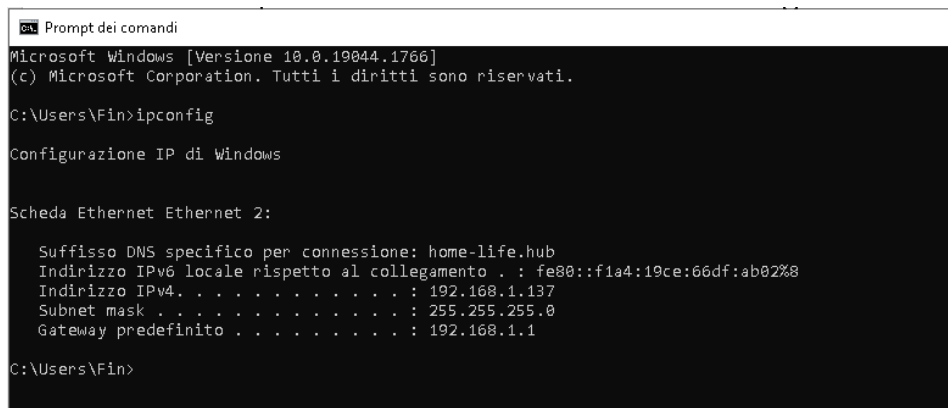


Image 2 - Command Prompt - ipconfig Command

These 3 parameters (IPv4 Address - Subnet Mask - Default Gateway) will be entered in the Network settings of the WiseFind Software (STEP 7)



STEP 2 - Check that the SNMP card is inserted inside the UPS



Image 3 – SNMP Card

STEP 3 - Connect the UPS to the company network with the network cable

In this way, an IP address is assigned to the SNMP to be able to view it on the network.



Image 4 – Network cable

STEP 4 - WiseFind Program Installation

Download and install on your PC the Wisefind program available at the following link:

<https://mega.nz/file/Wj5iEjZ#zvaKiiJy6jcZEsXWWQVWqa5wkwVVN4Mvp40E6nMgcE>

STEP 5 - Open the WiseFind program



Image 5 - Wisefind home screen



STEP 6 - Press Search to locate the UPS connected to the network

They will be displayed:

- Serial Number
- IP address
- MAC address

STEP 7 - Assign IP address to SNMP **(For this step, contact your IT consultant)**

Press Network and enter the addresses found in STEP 1

From the Ethernet card you need:

- Copy the **IPv4 address** (eg. 192.168.1.X) and paste it into the Network settings of the Wisefind (IP) Software by changing the last number (eg. 192.168.1.Y)
- Copy the **Subnet Mask** address and paste it into the Network settings of the Wisefind Software (Netmask)
- Copy the **Default Gateway** address and paste it into the Network settings of the Wisefind Software (Default Gateway)

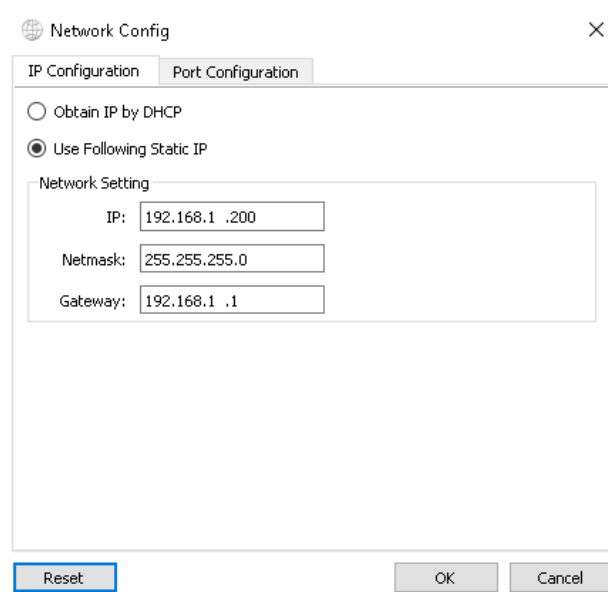


Image 6 – Wisefind - Network

STEP 8 - Viewing the SNMP configuration panel

If the Network data have been entered correctly, it will be possible to access the SNMP configuration panel by pressing Launch Web.



STEP 9 - Access to the SNMP configuration panel

Enter the following data to be able to access:

- **User name** : admin
- **Password** : KHadmin0592

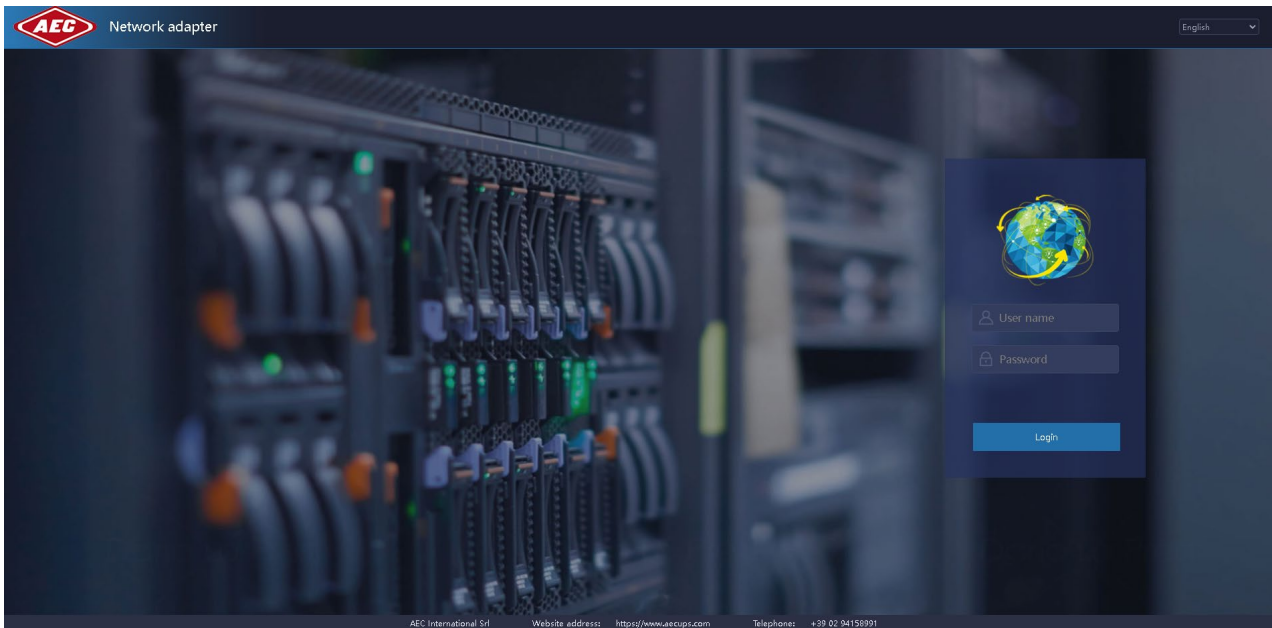


Image 7 - Configuration panel

TROUBLESHOOTING

- To avoid browser problems it is recommended to use Google Chrome as the default browser
- In case of problems it is advisable to delete the cookies and the browser cache
 - Open Chrome on your computer.
 - Click More. top right.
 - Click More tools. ...
 - Select a time interval at the top. ...
 - Check the boxes for the "Cookies and other site data" and "Cached images and files" options.
 - Click Clear Data.